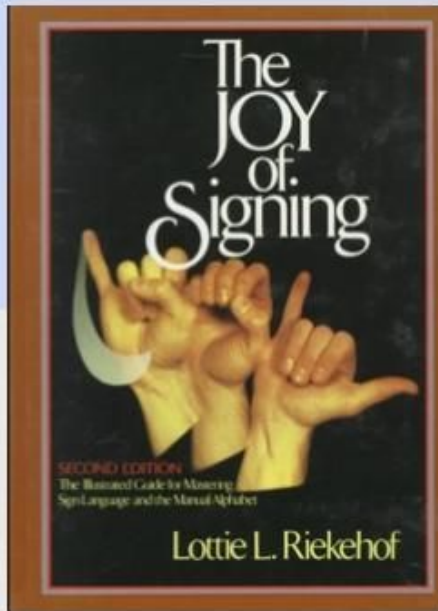


Academic  
Vocabulary



**WHO AM I?**  
Christopher Rawlings





What are we doing?

**“Some of the best interpreters are the best thieves”**

**Why?**

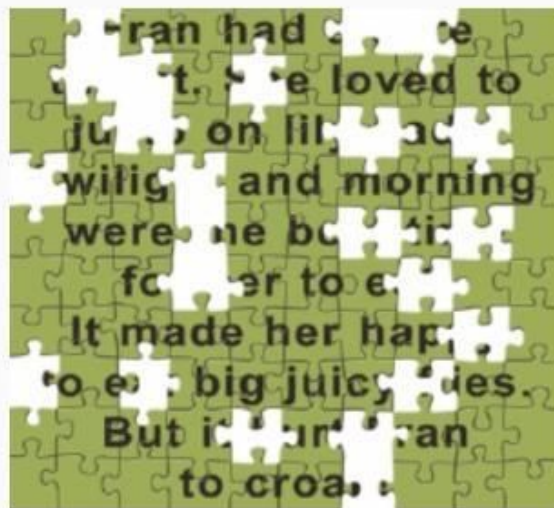
BUT FIRST...

What is it like to have a *Hearing Loss* in the classroom?

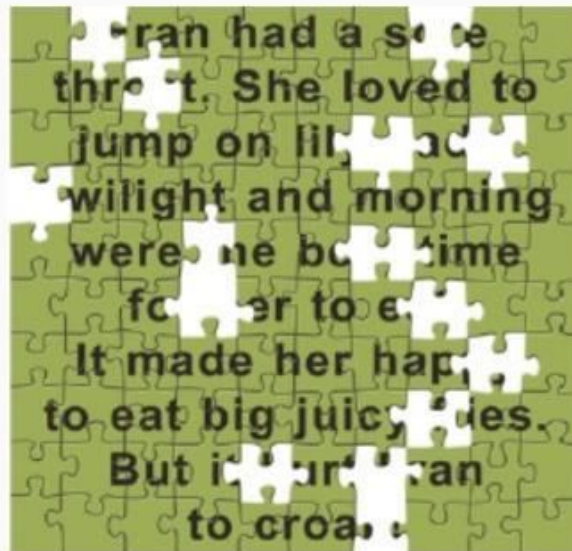
Tell us your thoughts

75% Access (That's enough right?)

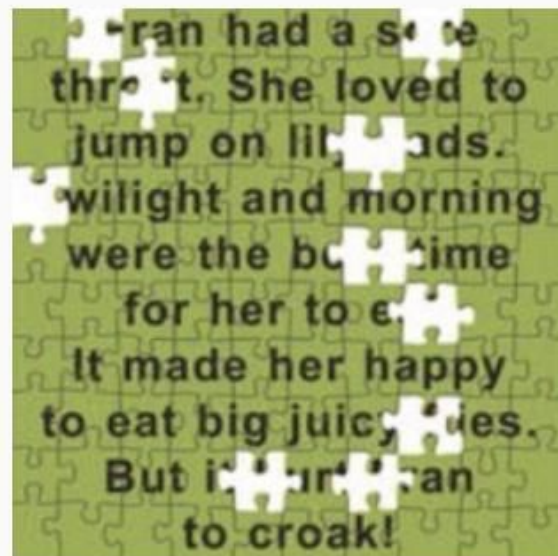
Give the main idea of this paragraph.



85% Access: Close to all of it?



90% Access: We are good now!



# 100% Access

Fran had a sore throat. She loved to jump on lily pads. Twilight and morning were the best time for her to eat. It made her happy to eat big juicy flies. But it hurt Fran to croak!

## Classifier Examples:

**Elemental:** [https://youtu.be/AFiq9Z\\_NXgs](https://youtu.be/AFiq9Z_NXgs)

**Body part:** <https://youtu.be/TtQPHeTJFZw>

**Semantic:** <https://youtu.be/BWusAlzOvOo>

# Technology “buzzwords”

Youtube

Snapchat-streak

Social Media (Facebook,  
Instagram)

Upload/download

STEM (Science Technology  
Engineering Math)

The Cloud



What does it look like?

What does it do?

How do you see it?



## example (Role Shifting)

<https://youtu.be/Ifzz909MyDI> (Dog Story)

<https://youtu.be/S0fcJ8ZKloQ> (Bernard Bragg -Eagle)



## Where can I find help?

- Khan Academy

<https://www.khanacademy.org/>

- Crash Course

<https://www.youtube.com/user/crashcourse/featured>

- Academic Standards for Wisconsin

<https://dpi.wi.gov/standards>

- ASL Core

<https://aslcore.org/>

- Atomic Hands

<https://www.atomichands.com/>

- Signing Science (Lydia Callis)

<http://archive.nytimes.com/www.nytimes.com/interactive/2012/12/04/science/science-sign-language.html>

- ASL clear

<https://clear.aslstem.com/app/#/>





# Break Time

10 min

<https://youtu.be/5KMTlYXYqE>



# History/Social Studies

Abolition

Ambassador

Attorney General (AG)

Affidavit

Antitrust laws

Autonomy

Alien

Aristocracy

Balance of power

Alliance

Arms control

Bias



It

# History/Social Studies

Bipartisanship

Capitalism

Cold war

Blockade

Caucus

Colonies

Boycott

Checks and balances

Commander in Chief

Bureaucracy

Civilization

Constitution



# History/Social Studies

Defacto

Democracy

Dissident

Deficit

Deport

Emancipation

Deflation

Desegregation

Due Process

Delegate

Dictator

Economic Policy



# History/Social Studies

Embargo

Europe

Government

Emancipation

Executive Branch

Grand Jury (SP)

Embargo

Extradition

Hard Money

Eminent Domain

Faction

Hierarchy



# History/Social Studies

Parliament

Privatization

Quorum

Party platform

Propaganda

Racism

Peace

Public Interest

Radical

Policy

Protest

Ratification



# History/Social Studies

Status Quo

Trade Deficit

Women's Liberation

Subsidy

Treason

Xenophobia (fear of other people)

Secession

Treaty

Zealot

Suffrage

Truce

Mass Media



# Science



# Science

Absorb

Biotechnology

Cell

Activate

Breakthrough (a new discovery)

Characteristic

Animal

Brain

Chromosome

Analysis

Carbohydrate (CARB)

CRISPR (gene editing)



# Science

Constraint

Digestion

Electron

Contract

DNA

Engineering

Conversion

Duplicate

Error

Cool

Evolution

Evaporate



# Science

Experiment

Ground

Heat/Hot

Fat (FS)

Gas

Humid

Final

Generation

Hurricane

Flood

Graph

Hypothesis



# Science

Initial

Liquid (FS)

Microscope

Inverse

Matter

Mixture

Light

Metamorphosis (butterfly life cycle)

Nature

Linear

Method

Neutron



# Science

Offspring

Poison

Proportion

Parental

Power

Quantity

Periodic table

Precision

Respiration

Physics

Proton

Reduce



# Science

River

Soluble

Sugar

Rubber

Spring

Symbol

Sample

Structure

Tuberculosis (TB)

Science

Substance

Temperature



# Science

Theory

Transportation

Warm

Throat culture

Tree

Weight

Time

Unlike/Dissimilar

Winter

Total

Urine

Work

Transfer

Venereal Disease (VD)

World



# Math





# Math

Absolute Value

Analyze

Base (Triangle)

Add/Sum (Column/Row)

Approximate

Binomial

Added to

Area

Calculate/Figure

Addition ( $2 + 5$ ) NOT Addition  
( $2...+...5$ )

Axis

Calculus



# Math

Coefficient

Cylinder

Domain

Constant (STAY)

Degree (Celsius/Fahrenheit)

Equal

Coordinate (On graph)

Denominator

Estimate

Cubed (root)

Numerator

Evaluate



# Math

Graph

Height (Rectangle)

Least Common  
Denominator (LCD)

Height (Of as person)

Inequality

Least common multiple  
(LCM)

Height (Triangle)

Intercept

Length

Height (Cylinder)

Inverse

Limit



# Math

MASS (*FS*)

Metric system

Nonlinear

Maximum

Minus Negative

Origin

Mean

Mode

Parallel

Median

Multiply

Parallelogram



# Math

Parenthesis

Quotient

Remainder

Percent

Radius

Slope ( $FS$ )

Perimeter

Reciprocals

Answer/Solve

Perpendicular

Reduce

Square



# Math

Straight

Term

Vary

Substitute

Triangle

Vertical

Subtract

Trigonometry

Weight/Weigh

Sum

Variable

Width



# Thanks everyone!

**Our contact information:**

Christopher Rawlings-

[Christopher.rawlingsabc@gmail.com](mailto:Christopher.rawlingsabc@gmail.com)

